



# GMT MONTHLY MEMBERSHIP PROGRESS REPORT

Results as of: 10/31/2024

Multiple District A

LOCATION: ONTARIO

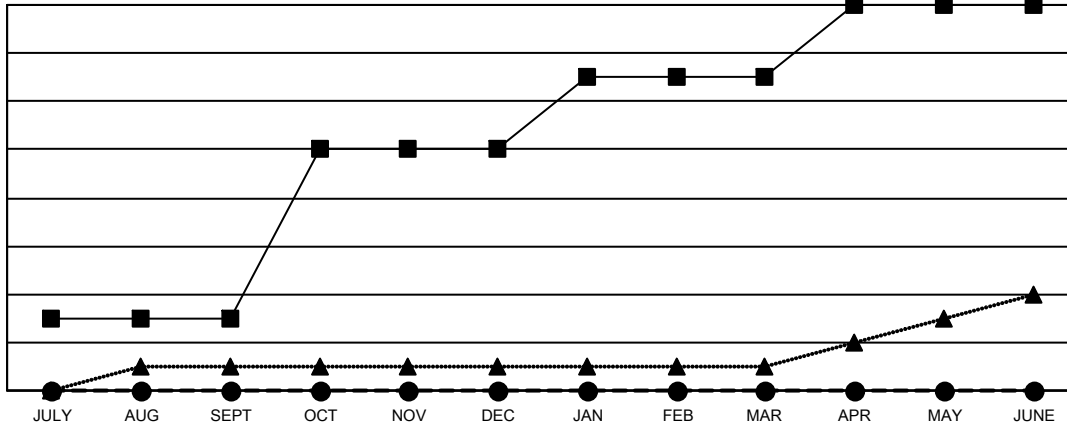
GMT: OPEN

GMT CA 2

| Clubs                 |               |           |               |
|-----------------------|---------------|-----------|---------------|
| RESULTS FOR 2024-2025 |               |           |               |
| QUARTER               | NEW CLUB GOAL | NEW CLUBS | DROPPED CLUBS |
| JULY/AUG/SEPT         | 3             | 0         | 1             |
| OCT/NOV/DEC           | 7             | 0         | 0             |
| JAN/FEB/MAR           | 3             | 0         | 0             |
| APR/MAY/JUNE          | 3             | 0         | 0             |

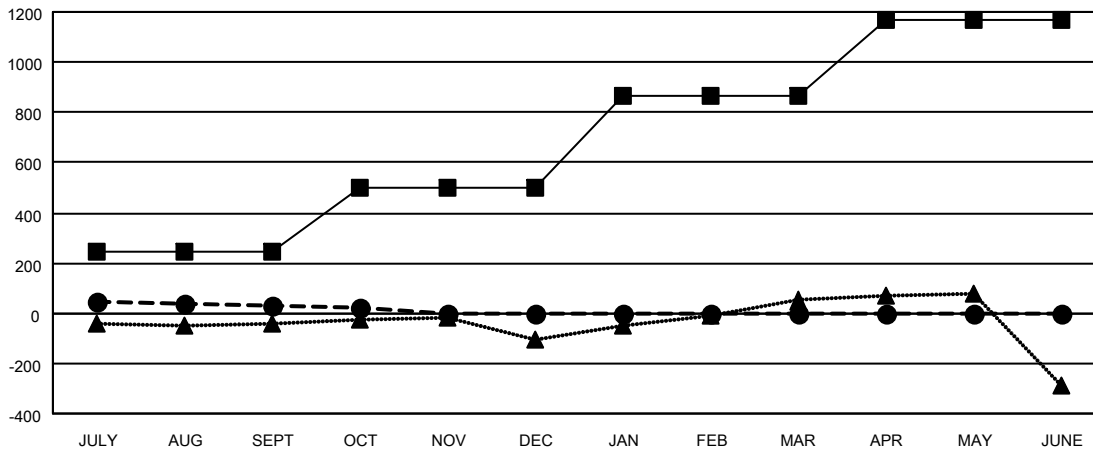
| Members               |                        |                      |  |
|-----------------------|------------------------|----------------------|--|
| RESULTS FOR 2024-2025 |                        |                      |  |
| QUARTER               | MEMBER GROWTH NET GOAL | MEMBER GROWTH ACTUAL | DROPPED MEMBERS ACTUAL (including transfers) |
| JULY/AUG/SEPT         | 245                    | 383                  | 294  |
| OCT/NOV/DEC           | 256                    | 133                  | 123  |
| JAN/FEB/MAR           | 365                    | 0                    | 0  |
| APR/MAY/JUNE          | 304                    | 0                    | 0  |

GOALS AND ACTUAL NEW CLUBS CUMULATIVE



- - CURRENT YEAR GOALS FOR NEW CLUBS
- - CURRENT YEAR ACTUAL NEW CLUBS
- ▲ - LAST YEAR ACTUAL NEW CLUBS

GOALS AND ACTUAL MEMBERS CUMULATIVE



- - MEMBER GROWTH NET GOAL
- - MEMBER GROWTH ACTUAL
- ▲ - LAST YEAR MEMBERSHIP ACTUAL

|                        |            |
|------------------------|------------|
| DROPPED CLUBS: 1       |            |
| <b>DROPPED MEMBERS</b> |            |
| DECEASED               | 58         |
| CLUB CANCELLED         | 0          |
| OTHER                  | 354        |
| <b>TOTAL</b>           | <b>412</b> |

165 CLUBS OF 513 ADDED 1 OR MORE NEW MEMBERS

| GENDER DISTRIBUTION |                |
|---------------------|----------------|
| MALE                | 7,616 (63.11%) |
| FEMALE              | 4,451 (36.89%) |

[CLICK HERE FOR CUMULATIVE MEMBERSHIP DATA](#)

|                                 |   |
|---------------------------------|---|
| TOTAL FAMILY UNIT MEMBERS       | 0 |
| FAMILY MEMBERS PAYING HALF DUES | 0 |